

# **TV Lift - TS750**

## Important safety Instructions

**CAUTION: Before you begin any of the Installation procedures on page 3, read and follow the warnings and safety instructions on this page.**

**WARNING ! THIS IS NOT A TOY !**

### **WARNING !**

**This appliance can be used by children aged from 8 years and above and persons with reduced physical, sensory or mental capabilities or lack of experience and knowledge if they have been given supervision or instruction concerning use of the appliance in a safe way and understand the hazards involved. Children shall not play with the appliance. Cleaning and user maintenance shall not be made by children without supervision.**

### **WARNING !**



**This is a class III appliance and shall only be used together with a SELV power supply unit with 29Vdc, min. 100W and an overload current of at least 9A!**

## Waste disposal



Do not deposit this equipment with the household waste. Improper disposal can harm both the environment and human health. For Information about waste collection facilities for used electrical and electronic devices, please contact your city council or an authorized company for the disposal of electrical and electronic equipment.

## Symbol explanation



Class III appliance, designed to be supplied from safety extra-low voltage power source (SELV)



Class II appliance, doubled insulated electrical appliance



Waste Electrical and Electronic Equipment

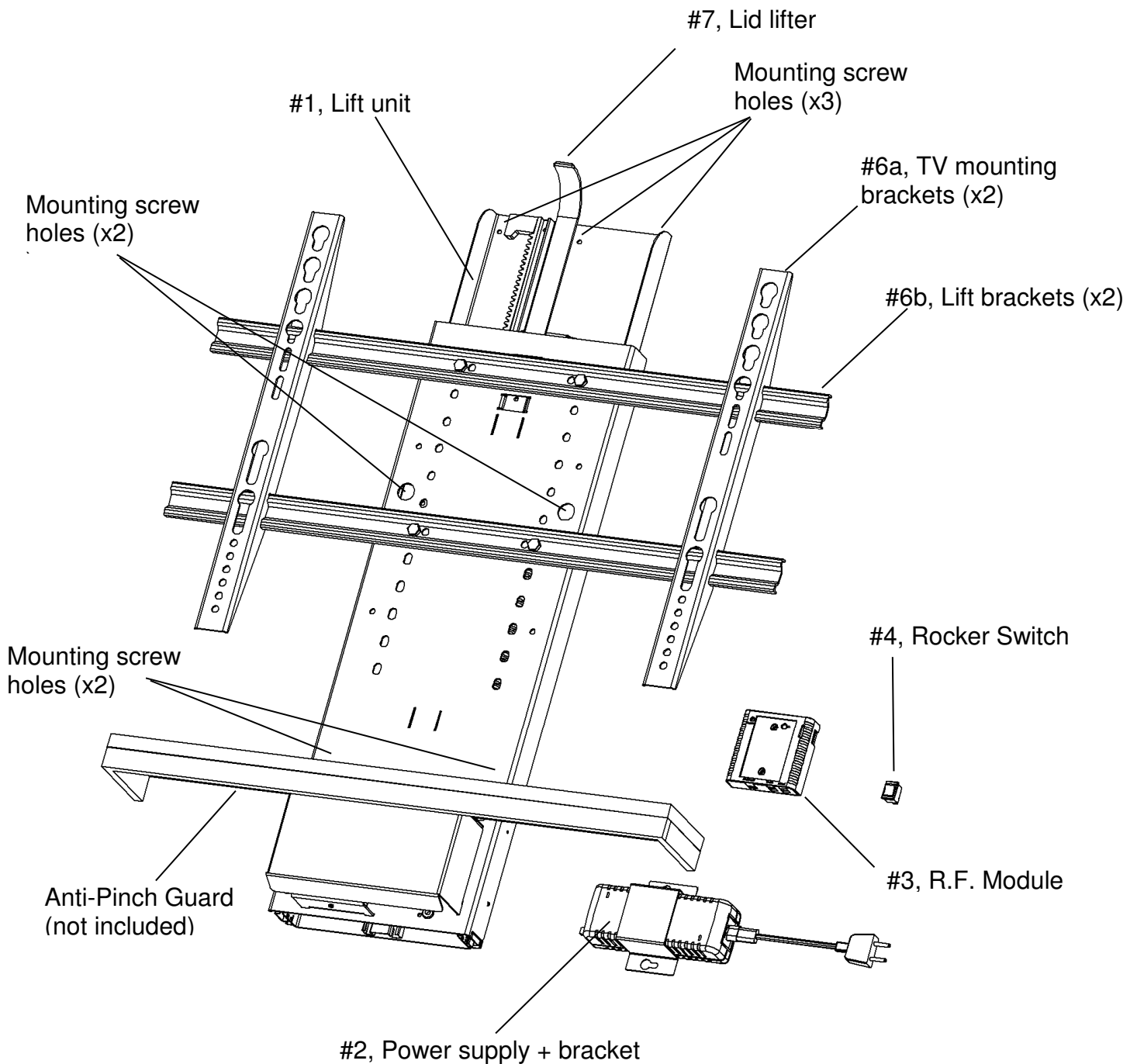
# Electrical TV Lift mechanism TS750



## Parts included with your TV Lift

- Lift unit ( #1 )
- Power supply + bracket ( #2 )
- R.F. Module ( #3 )
- Rocker switch ( #4 )
- Remote Control (not shown)
- Plasma screen brackets ( #6a )
- Lift Brackets ( #6b )
- Lid Lifter ( #7 )

The TS750 TV Lift is designed to operate loaded with minimum 5 kg. It is important that the lift is used loaded to at least the minimum kg to avoid excessive operation noise especially on the down cycle.



Use the following safety guidelines to help protect your lift from potential damage and to ensure your own personal safety.

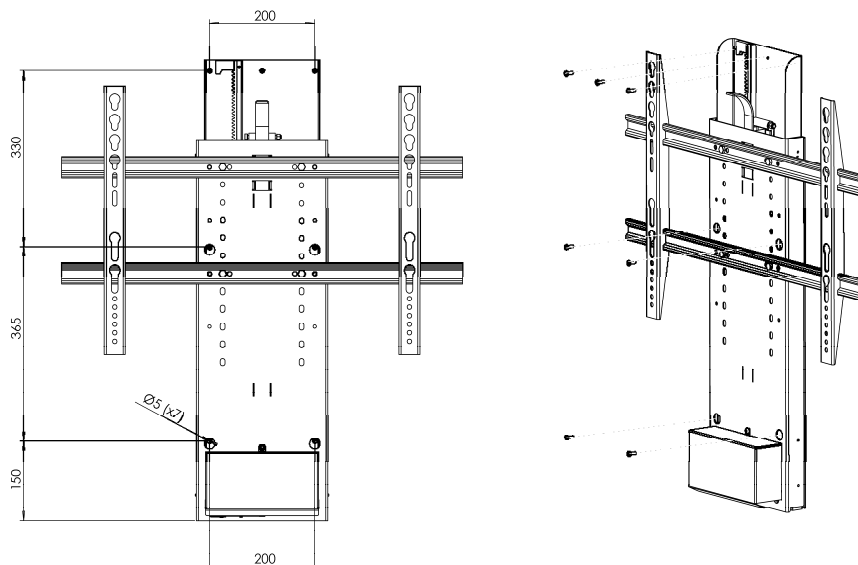
- Read all the installation instructions before testing or installing your lift.
- Read and follow all safety instructions.
- To prevent bodily injury keep hands and clothing away from the lift while the lift is in operation.
- Before installing the lift or working with its connections, unplug the lift from the electrical shock.
- Do not install the lift, power supply or R.F. module in places subject to extreme temperatures for example near a radiator, or heating vent.
- To avoid damaging the power supply, R.F. module and power cord, do not put anything on it or place it where it could become damaged.
- Unplug the lift in the following conditions:
  - When the power cord or plug is damaged or frayed.
  - If liquid has spilled into the lift, power supply or RF module.
  - If the lift, power supply or RF module has been exposed to rain or water.
  - If the lift exhibits a distinct change in performance, indicating a need for servicing.
- The battery must be removed from the RF emitter before it is scrapped.
- In case of a leaking RF emitter battery it must be replaced wearing protective gloves.

## Mounting Instruction for the TV Lift

- 1) Remove all contents from packaging and compare with parts lists. Test the lift at the same time. Refer to the drawing and to the user instruction packed along with the remote unit proceed as follows: Connect the lift (#1) to the RF Module (#3). Once all connections have been made, plug power supply (#2) into the wall socket. Position lift vertically. Test lift using rocker switch (#4) – have lift travel a few inches and then back down. Use same method to test remote. The rocker switch must be pressed continuously to make lift work. Releasing switch will stop unit immediately. The remote starts the lift to move continuously by one single pres on “up” or “down” button. The lift stops again by pressing either “up” or “down” button again.

**Please see “Helpful Hints” on page 4 before continuing**

- 2) Place the lift unit (#1) on the back panel of cabinet in a location that will allow full up and down movement of TV. Unit must be a minimum of 1/8” down from the top edge of the cabinet.
- 3) Fasten the unit securely to the cabinet using the 7 screw holes shown in the drawing on page one. **Screws must be appropriate for the material being used. Lift must be mounted vertically (using a level) inside cabinet.**

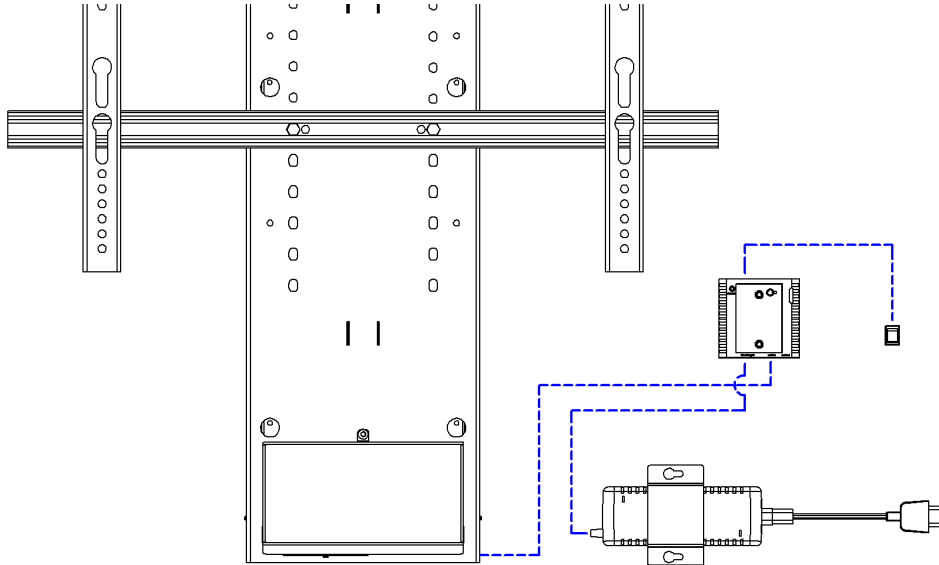


- 4) Fasten the power supply + bracket (#2) on the back of the cabinet on the right side of the unit as shown in the drawing. Secure with 2 screws.
- 5) Fasten R.F. Module (#3) next to the power supply leaving enough room to connect wires.
- 6) Mount rocker switch (#4) to the upper part of the cabinet towards the front by cutting a hole and pressing the switch into place. Secure excess wire to keep away from moving parts.

## Electrical TV Lift mechanism TS750



- 7) Make connections as done previously for testing. Plug the power cord into wall outlet and test the lift. Refer to the connection diagram below:



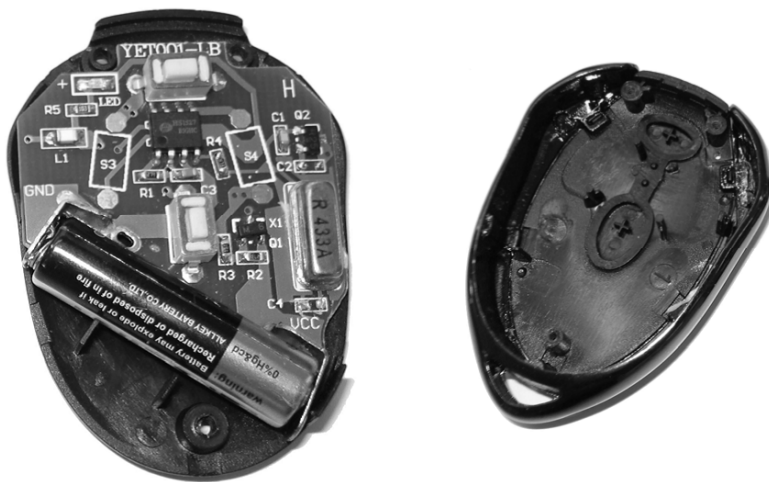
- 8) Slide both flat screen brackets (#6a) onto the two lift brackets (#6b) as shown in the drawing. Adjust the brackets to fit the mounting holes on the TV. Secure brackets to the TV – **MAKE SURE TV IS CENTERED ON BRACKETS.**
- 9) Raise lift to uppermost position. Place TV in best position on lift based on the size of the TV. Put bolts on lift bracket through lift front and bolt into position. Lower lift with TV, making sure the TV does not extend past top edge of cabinet in the lowered position.
- 10) Insert lid lift (#7) into slot on lift with curve facing toward the front. The top of the lifter curve must be above the top of the TV. With lift in the up position, use allen wrench to secure lid lifter in place.

The instructions above are based on a typical cabinet installation.


## Change of battery in RF emitter, type 27A/12V:

- 1.) Remove the three screws on back side
- 2.) Remove the lid on back side
- 3.) Lift up old battery. In case of a leaking battery wear protection gloves.
- 4.) Place new battery with positive polarity pointing to the mark VCC on the PCB.
- 5.) Place lid on back side and tighten the three screws

Do not deposit used batteries with the household waste use special waste collection facilities for used batteries.



## Specifications:

<b>Materials and weights:</b>	Steel, black powder coated - Weight ~ 20 kg
<b>Max. working loads:</b>	55 kg (by standard installation) 29 kg (when lift is mounted upside down)
<b>Duty cycle:</b>	Max T <sub>on</sub> : 1min, T <sub>off</sub> : 9min
<b>Operation:</b>	Remote and rocker switch
<b>Operation voltage:</b>	29V
<b>Operation effect:</b>	Max 100W
<b>Required power supply unit overcurrent capacity:</b>	9A
<b>Power supply unit:</b>	100-240VAC, 50/60Hz, 1.5A Type: W52RA198-290018Q  Standby: 0.15 Watt
<b>Fuse</b>	3.15A/250V, time-lag, IEC 60127
<b>Battery</b>	Type 27A, 12V

### Helpful Hints:

- a) Test lift mechanism and remote / rocker switch before mounting in cabinet.
- b) Mount TV lift and electronics to plywood panel and attach to inside back of cabinet using appropriate number of screws. This allows all components to be removed from the cabinet if necessary. If this is not possible, create an access panel to the electronics.
- c) Create an Anti-Pinch Guard (#8) and mount to metal box on lift under TV using double-stick tape, Velcro, etc that will allow the guard to disengage under pressure.
- d) See troubleshooting on [www.venset.com](http://www.venset.com), click "support".

### Declaration of conformity

We hereby declare, under our sole responsibility that the following products:

- electric TV-lift mechanism product type TS750

which are covered by this statement, are in conformity with the following standards and other normative documents::

- Counsel Directive 89/336/EØF with later changes
- Counsel Directive 73/23/EØF with later changes

#### **Manufacturer:**

VENSET A/S, Nygade 63, DK-6900 Skjern, Denmark  
[info@venset.com](mailto:info@venset.com), [www.venset.com](http://www.venset.com)

**The information in this document is subject to change without notice.**



## Overensstemmelseserklæring

Declaration of conformity

Fabrikant (navn og adresse): VENSET A/S, Nygade 63, DK-6900 Skjern, Denmark  
Manufacturer (name and address):

Erklærer hermed, at følgende produkt:  
Hereby certify that the following product:

Benævnelse, mærke, type:  
Description, ID/mark, type:

Elektrisk TV-lift, TS750 series  
Electric TV-lift, TS750 series

Evt. serienr.:  
Serial No. if any:

Alle efter serie nr. v-00055  
All after serial No. v-00055

Er fremstillet i overensstemmelse med Europa-Parlamentets og Rådets Direktiv af 15. december 2004 om indbyrdes tilnærmelse af medlemsstaternes lovgivning om elektromagnetiske kompatibilitet (2004/108/EF) ifølge standarderne DS/EN 55014-1:2007, DS/EN 55014-2:1997, DS/EN 61000-3-2:2006, EN 61000-3-3:2008  
Complies with the EMC directive 2004/108/EC according to the standards DS/EN 55014-1:2007, DS/EN 55014-2:1997, DS/EN 61000-3-2:2006, EN 61000-3-3:2008

og er fremstillet i overensstemmelse med Europa-Parlamentets og Rådets Direktiv af 12. december 2006 om indbyrdes tilnærmelse af medlemsstaternes lovgivning om elektrisk materiel bestemt til anvendelse inden for visse spændingsgrænser (2006/95/EF) ifølge standarden DS/EN 60335-1:2006  
and complies with the DIRECTIVE 2006/95/EC OF THE EUROPEAN PARLIAMENT AND OF THE COUNCIL of 12 December 2006 on the harmonization of the laws of Member States relating to electrical equipment designed for use within certain voltage limits (codified version) according to the standard DS/EN 60335-1:2006

Navn, titel og underskrift af fabrikanten:  
Name, title and signature of manufacturer:

4/5-2009  
Dato/date

  
M. Overgaard  
Approval Engineer  
Underskrift/signature

  
VENSET A/S  
Nygade 63 · DK-6900 Skjern  
Tel: +45 9735 4611 · Fax: +45 9735 4631